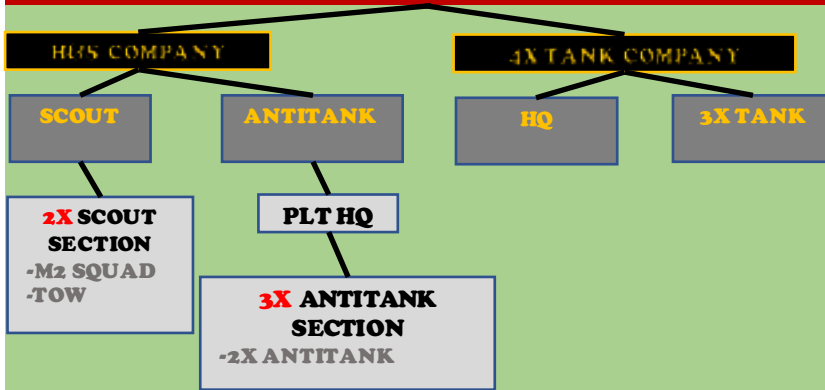


# TANK BATTALION



**TANK BN MISSION:** To **CLOSE** with and **DESTROY** the enemy with **ARMOR-PROTECTED FIREPOWER, SHOCK EFFECT, and MANEUVER.**

**ANTITANK PLT** provides **ANTI-MECHANIZED** support to Division.  
VEHICLES

## **M1A1**

**Cruise Range**(273-298 @ 25mph); **MAX**(42 mph);

**CREW**(4- driver, loader, gunner, tank commander)

**MAIN WEAPON**(120mm M256A1-4000m Range)

**SEC WEP**(.50 cal M48 / 7.62mm M240 M / M250 grenade launcher)

FEATURES: DWFK, PLRS, DECU

**TOW**-Tube Launched, Optically Tracked, Wire Guided

**MISSION: TO ENGAGE AND DESTROY ARMORED VEHICLES.**

**MAX EFF**(2.33 miles)

TOW 2(Upgrade): Reusable Launcher, Missile Guidance Set, Sight System.

## **M88A2 HRV-Recovery Vehicle**

Improved recovery vehicle with additional weight of 70 tons.