

## 136 LOGISTIC COMBAT ELEMENT (LCE), MEDICAL BATTALION FUNDAMENTALS

References:

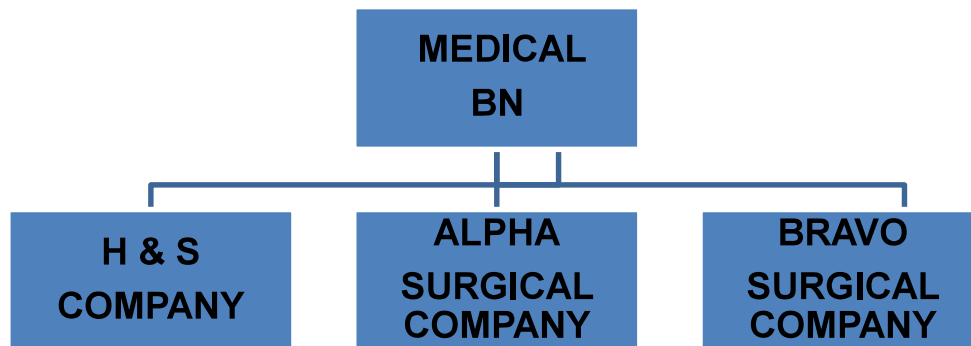
- [a] MCRP 5-12D, Organization of Marine Corps Forces
  - [b] MCWP 4-11.1, Health Service Support Operations
  - [c] Marine Corps Bulletin 5400 020011ZSEP 2005
  - [d] MARADMIN 576/05 Logistics Combat Element (LCE) Reorganization Update and POA&M
- 

136.1 Describe the mission and organization of Medical Battalion.

**HSS to MEF**

The **mission of Medical Battalion** is to provide **direct and general Health Service Support to the MEF** in order to **sustain the combat effort across the full spectrum of MAGTF operations.**

**Organization:** The **Medical Battalion** is an independent **functional Battalion** organized to **plan, coordinate, and supervise** the **medical support** functions of the **MEF**. It is structured to facilitate task organization for operations conducted by the battalion in support of the MEF or any combination of smaller MAGTFs operating in widely separated geographical areas.



136.2 Discuss the six tasks of Medical Battalion:

**6 TASKS = 2RIPMD**

- Provide health care through the **2nd echelon of medical care**, including **initial resuscitative care, resuscitative surgery, and temporary hospitalization of casualties, to the MEF.**
- Provide **medical Regulating** services for the **MEF.**
- Assist in the **collection, analysis, and dissemination of medical Intelligence.**
- Provide **Preventive medicine** support to the **MEF.**
- Provide medical support for management of **Mass casualties and combat stress casualties.**
- Provide the **medical elements** for the **establishment of casualty Decontamination and treatment stations.**

136.3 Define the mission and organization of Medical Battalion H&S Company.

The **mission of Medical Battalion H&S Company** is to provide **command, control,** and **command support** functions for the **medical battalion.**

**Organization:** The Company is **organized to plan, coordinate, and supervise** the **command support functions for the battalion.** It is structured to facilitate task organization for operations conducted by the battalion in **support of MAGTF operations.**

## 136 LOGISTIC COMBAT ELEMENT (LCE), MEDICAL BATTALION FUNDAMENTALS (CONT'D)

136.4 Discuss four tasks of Medical Battalion H&S Company:

**4 Tasks = LAMP**

- Provide **L**imited medical evacuation for the battalion.
- Provide **A**ministrative, organic supply, light motor transportation, and **M**aintenance support to the battalion.
- Provide **M**edical data coordination for the battalion.
- Provide **M**edical department **P**ersonnel, as required, to the headquarters elements.

136.5 Define the mission and organization of Medical Battalion Surgical Support Company.

The **mission of Medical Battalion Surgical Support Company** is to provide general medical support to the MEF, including medical treatment facilities for medical and surgical care and temporary casualty holding.

**Organization:** The Company is organized to plan, coordinate, and supervise assigned functions of medical support for the battalion. It is structured to facilitate task organization for operations conducted by the battalion in support of the MEF, MEF (FWD), or any combination of smaller MAGTFs. The Company consists of a headquarters platoon, triage/evacuation platoon, surgical platoon, holding platoon, combat stress platoon, and an ancillary service platoon. The surgical platoon consists of three surgical sections that support one operating room for 24-hour operations. The holding platoon contains three ward sections, each containing 20 medical/surgical beds. The ancillary services platoon contains two laboratory sections, two pharmacy sections and two X-ray sections.

136.6 Discuss the six tasks of the **Surgical Support Company:**

**6 Tasks = MMRECM**

- Establish **M**edical treatment facilities for **r**esuscitative surgery, **m**edical treatment, and temporary hospitalization of casualties.
- Establish **M**edical treatment facilities for resuscitative surgery, medical treatment, and temporary holding of casualties from **s**upported forces.
- Be prepared to **R**eceive casualties from the **n**ext forward medical treatment echelon in the evacuation chain.
- Prepare to **E**vacuate casualties whose medical requirements exceed the established theater evacuation policy.
- Provide and **C**oordinate medical evacuation for the **l**anding force.
- Provide **M**edical support to personnel of **o**ther services and nations as provided in applicable regulations and agreements, and provide **h**umanitarian care as required by international law.

136.7 Define the mission and organization of Medical Battalion **Shock-Trauma Platoon.**

The **mission of Medical Battalion Shock-Trauma Platoon** is to provide direct medical support to the MEF, including collecting, clearing, and evacuating casualties from supported MEF elements, and provide medical treatment facilities for resuscitative treatment care and temporary holding of casualties.

**Organization:** The shock-trauma platoon is the smallest mobile medical support element of the medical battalion and is the first medical treatment facility of the MAGTF in support of the BAS. The eight shock-trauma platoons are structured to facilitate task organization for operations conducted by the battalion in support of the MEF, the MEF (FWD), or any combination of smaller MAGTFs. The platoon consists of a stabilization section and a

## 136 LOGISTIC COMBAT ELEMENT (LCE), MEDICAL BATTALION FUNDAMENTALS (CONT'D)

collecting and evacuation section. Each collecting and evacuation section has **two tactical ambulances** for collecting casualties from the next forward medical support echelon, and the stabilization section has **7-ton trucks** to move the shock-trauma platoon personnel and equipment.

136.8 Discuss **four tasks** of the **Shock Trauma Platoon**:

- **Provide medical support** to **personnel** of **other services** and **nations** as provided in applicable regulations and agreements and **provide humanitarian care** as required by international law.
- **Establish and operate clearing stations**, as required.
- **Establish medical treatment facilities** for resuscitative treatment and **temporary holding of casualties**.
- **Provide and coordinate medical evacuation**.

136.9 Define the mission and organization of the Medical Battalion **Forward Resuscitative Surgery System (FRSS)**.

The **mission of the FRSS** is to **provide surgery capability that can be quickly configured and erected to support any tactical medical situation ashore in a forward combat environment**. To provide lifesaving capabilities to support Marine Air-Ground Task Force operations on a **continuous 24-hour basis**, with a minimum mission duration of **48 hours without resupply**.

**Organization:** The forward resuscitative surgery system is a **free standing** or **connected modular configuration**, **highly mobile package** that includes personnel and medical material that transforms into a supplied surgical cockpit and/or encasement. The FRSS is capable of providing trauma management, resuscitative surgery, ancillary services, and temporary patient holding.

136.10 **Define the following acronyms:**

BAS	Battalion Aid Station
RAS	Regimental Aid Station
GAS	Group Aid Station
BDC	Blood Donor Center
CRTS	Casualty Receiving and Treatment Ship
FMC	Field Medical Card
HSS	Health Service Support
MAP	Medical Augmentation Program
MTF	Medical Treatment Facility
STP	Shock Trauma Platoon
TMIP	Theater Medical Information Program

**136 LOGISTIC COMBAT ELEMENT (LCE), MEDICAL BATTALION  
FUNDAMENTALS (CONT'D)**

136.11 Define the following echelons of care:

- Level I:** Initial Emergency Care; includes; Buddy aid, Company Corpsman, BAS, and STP care.
- Level II:** Initial Resuscitative Surgical Care; includes; FRSS's and CRTS's.
- Level III:** Resuscitative Care; includes; Fleet Hospitals, TAH's and Army CSH's
- Level IV:** Definitive Care; includes overseas MTF's.
- Level V:** Rehabilitative Care; includes CONUS facilities capable of rehabilitating patients to the greatest extent possible.

# 137 LOGISTIC COMBAT ELEMENT (LCE), ENGINEERING SUPPORT BATTALION (ESB) FUNDAMENTALS

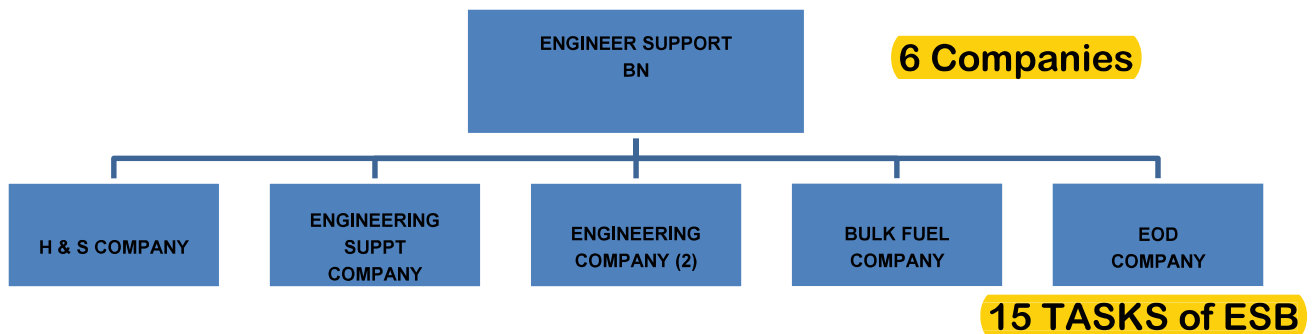
References:

- [a] MCRP 5-12D, Organization of Marine Corps Forces
- [b] MCWP 3-17, Engineering Operations
- [c] Marine Corps Bulletin 5400 020011ZSEP 2005
- [d] MARADMIN 576/05 Logistics Combat Element (LCE) Reorganization Update and POA&M

137.1 Define the mission and organization of Engineering Support Battalion.

The **mission of Engineering Support Battalion** is to provide general engineer support of an expeditionary nature to the Marine Air Ground Task Force including mobility, counter-mobility, survivability, engineer reconnaissance, tactical utilities, bulk water production & storage, bulk fuel storage, and explosive ordnance disposal. Be prepared to support missions exceeding the organic capabilities of the Division and Wing engineers.

**Organization:** The Engineering Battalion is an independent battalion and is organized to plan, coordinate, and supervise the general engineering and supply support functions of the battalion. It is structured to facilitate task organization for operations conducted by the battalion in support of the MEF or combinations of smaller MAGTFs.



137.2 Discuss the 15 tasks of Engineering Support Battalion:

- Conduct engineering Reconnaissance that is necessary to support the battalion's mission or other engineering needs of the MEF.
- Construct, improve, and maintain Airfields, including expeditionary airfields.
- Conduct Counter mobility operations through installation of obstacles and barriers, including explosive and non-explosive obstacles.
- Provide EOD support, as required, to the MEF.
- Provide Bath and laundry services beyond supported units' capabilities.
- Provide Utilities support, including mobile electric power beyond supported units' capabilities and electrical power distribution within camps.
- Provide bulk class III and III (A) fuel support, including receipt, storage, and dispensing of bulk Fuel products.
- Construct Field-expedient deception devices.
- Conduct Mobility operations, including breaching, reducing, and removing explosive or non-explosive obstacles.
- Construct, improve, and maintain Encampments and other MEF-required support facilities by using available material or pre-engineered structures.
- Provide specialized Demolition operations beyond supported units' capabilities.

**BLEED DRAW FUCCEM**

**Think  
of  
Drawing**

## 137 LOGISTIC COMBAT ELEMENT (LCE), ENGINEERING SUPPORT BATTALION (ESB) FUNDAMENTALS (CONT'D)

- **Install and/or supervise** other units in the installation of standard and nonstandard fixed-panel and floating **Bridging**, including planning and controlling bridging operations in support of MEF mobility requirements.
- **Provide Survivability Enhancements**, including the construction of protective structures.
- **Provide Water purification** and bulk class I (water) storage and dispensing for the MLG and other elements of the MEF when requirements exceed supported units' capabilities.
- **Conduct Mobility enhancement operations**, including the construction, improvement, and maintenance of lines of communications and main supply routes.

137.3 Define the mission and organization of **ESB H&S Company**.

The **mission of ESB H&S Company** is to provide **command and control**, **administration**, and command support functions for the engineer support battalion to the MEF.

**Organization:** The Company is organized to **plan, coordinate, and supervise** the command support functions for the battalion in support of MAGTF operations.

137.4 Define the mission and organization of **ESB Engineer Support Company**.

The **mission of ESB Engineer Support Company** is to **provide direct maintenance support** for **specified equipment** that is **organic to the battalion**, **direct support** transportation and services support to the battalion, and **general support**/reinforcing augmentation, as required, to the engineer companies of the battalion in support of the MEF operations.

**Organization:** The Company is organized to **plan, coordinate, and supervise** the command support functions for the company and to facilitate task organization for engineer maintenance support for operations conducted by the battalion in support of MAGTF operations.

137.5 Define the mission and organization of **ESB Bridge Company**.

The **mission of ESB Bridge Company** is to provide **general** standard tactical bridging support to enhance the tactical mobility of the MEF.

**Organization:** The Company is organized to **plan, coordinate, and supervise bridging** support operations of the battalion. It is structured to facilitate task organization for bridging operations conducted by the battalion in support of the MEF or any combination of smaller MAGTFs.

137.6 Define the mission and organization of **ESB Bulk Fuel Company**.

The **mission of ESB Bulk Fuel Company** is to provide **general** support, **class III supply** support to the MEF, including distribution to, but not within, air bases in support of MEF operations.

**Organization:** The Company is organized to **plan, coordinate, and supervise** the **bulk fuel support of the battalion**. It is structured to facilitate task organization for bulk fuel operations conducted by the battalion in support of the MEF or any combination of smaller MAGTFs.

## 137 LOGISTIC COMBAT ELEMENT (LCE), ENGINEERING SUPPORT BATTALION (ESB) FUNAMENTALS (CONT'D)

137.7 Define the mission and organization of **ESB Engineer Company**.

The **mission of ESB Engineer Company** is to provide **general engineering support** of an expeditionary nature to the MEF.

**Organization:** The Company is organized to **plan, coordinate, and supervise the engineering support functions of the battalion**. It is structured to facilitate task organization for operations conducted by the battalion in support of the MEF or any combination of smaller MAGTFs.

137.8 Define the mission and organization of **EOD Company**.

The **mission of EOD Company** is to support Marine Operating Forces, national security strategy, and force protection by locating, **accessing, identifying, rendering safe, neutralizing, and disposing of hazards** from foreign and domestic, CBRNE, UXO, IEDs and weapons of mass destruction (WMD) that present a threat to operations, installations, personnel, or material." (MCRP 3-17.2C)

**Organization:** The Company is **organized to plan, coordinate, and supervise the explosive ordnance disposal functions of the battalion**. Explosive Ordnance Disposal Company consists of: EOD Company Head Quarters, EOD General Support Platoon (containing a Platoon Commander and an EOD Officer and 3 sections of 8 Marines each), and EOD Platoons (One platoon is established to support each Infantry Regiment. Each platoon is structured the same as the GS Platoon (three sections of 8 and 2 officers).

## 138 LOGISTIC COMBAT ELEMENT (LCE), DENTAL BATTALION FUNAMENTALS

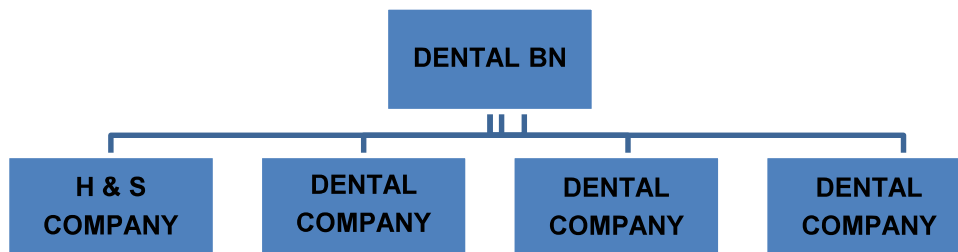
References:

- [a] MCRP 5-12D, Organization of Marine Corps Forces
  - [b] MCWP 4-11.1, Health Service Support Operations
  - [c] Marine Corps Bulletin 5400 020011ZSEP 2005
  - [d] MARADMIN 576/05 Logistics Combat Element (LCE) Reorganization Update and POA&M
- 

138.1 Define the mission and organization of Dental Battalion.

The **mission of Dental Battalion** is to provide **general support dental healthcare to the MEF.**

**Organization:** The **Dental Battalion is an independent battalion**, organized to **plan, coordinate, and supervise dental healthcare for the MEF.** It is structured to facilitate task organization for operations conducted by the battalion in support of the MEF, or any combination of smaller MAGTFs operating in widely separated geographical areas.



138.2 Discuss the **four tasks of Dental Battalion:**

**4 Tasks = PCPS**

- **Provide a comprehensive program of dental healthcare for the MEF.**
- **Coordinate MEF dental health care support requirements.**
- **Provide dental detachments, as required, to support MAGTFs smaller than a MEF.**
- **Supervise implementation of dental healthcare delivery programs for the MEF.**

138.3 Define the mission and organization of Dental Battalion **H&S Company.**

The **mission of Dental Battalion H&S Company** is to **provide command, control, and command support functions.**

**Organization:** The Company is organized to **plan, coordinate, and supervise command support functions for the battalion.** It is structured to facilitate task organization for operations conducted by the battalion in support of MAGTF operations.

138.4 Discuss **two tasks** of Dental Battalion H&S Company:

- **Provide command support functions** for the operation of the battalion.
- **Assist with and coordinate professional matters** such as quality assurance, infection control, dental readiness, dental information retrieval system, professional and in-service training for the battalion.



## 138 LOGISTIC COMBAT ELEMENT (LCE), DENTAL BATTALION FUNAMENTALS (CONT'D)

138.5 Define the mission and organization of Dental Battalion Dental Company.

The **mission of Dental Battalion Dental Company** is to provide general support dental healthcare to the major subordinate elements of the MEF.

**Organization:** Three dental companies are organized to provide support to each of the major subordinate elements of the MEF to facilitate task organization as detachments in support of MAGTFs smaller than a MEF.

138.6 Discuss two tasks of Dental Battalion Dental Company:

- Maintain MAGTF units in an acceptable state of dental readiness.
- Provide a comprehensive dental program for the MEF, including emergency dental treatment and specialty disciplines with the exception of maxillofacial surgery.