

135 LOGISTIC COMBAT ELEMENT (LCE), TRANSPORTATION SUPPORT BATTALION FUNDAMENTALS

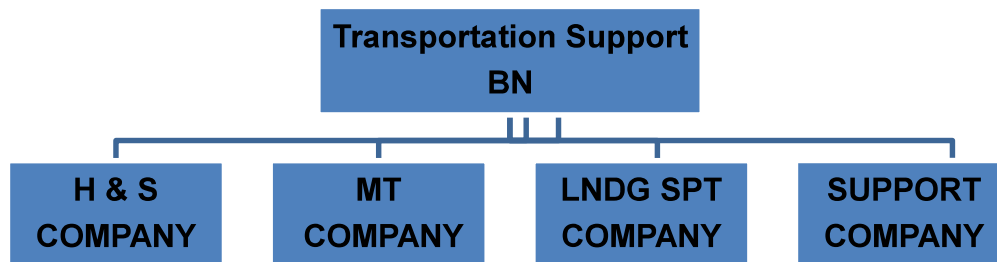
References:

- [a] MCRP 5-12D, Organization of Marine Corps Forces
 - [b] MCWP 4-1, Logistics Operations
 - [c] MCWP 4-11.3, Transportation Operations
-

135.1 Define the mission and organization of Transportation Support Battalion.

The **mission of Transportation Support Battalion** is to **provide transportation** and throughput support for **the MEF**, to facilitate the distribution of personnel, equipment, and supplies by air, ground, and sea.

Organization: The battalion consists of an **H&S company**, a **Motor T Company A**, **Landing Support Company**, and **Support Company**. The battalion is equipped and organized to provide logistic and tactical cargo vehicle support and petroleum transporter support.



135.2 Discuss the **4 tasks** of **Transportation Support Battalion** of MLG:

3 Lifts and a Haul (MLHP)

- **Provide medium-lift and heavy-lift transport** and distribution of bulk dry/water cargo, class III and III (A), and class V and V (A) supplies.
- **Provide line haul** and unit/supply point distribution of bulk liquids, with motor transport augmentation as required from supported unit(s).
- **Provide heavy equipment lift augmentation**, including evacuation of tracked vehicles, to supported units of the MEF.
- **Provide personnel lift augmentation** to supported units of the MEF.

135.3 Define the mission and organization of H&S Company of Transport Support Battalion. [ref. a, p. 5-62]

(H&S "always" command, control and admin)

The **mission H&S Company of the Transport Support Battalion** is to **provide command, control, administration, and command support** functions for the battalion.

Organization: The Company is organized to provide the motor transport battalion with command and control, organic communications, and organizational (2d echelon) maintenance support.

135 LOGISTIC COMBAT ELEMENT (LCE), TRANSPORTATION SUPPORT BATTALION FUNDAMENTALS (CONT'D)

135.4 Define the mission and organization of the Landing Support Company of TSB.

The **mission of LS Company** provides general support, including support of the **ship-to-shore movement during amphibious operations** and of terminal operations during subsequent operations ashore, to permit required throughput of supplies, equipment, and personnel for sustainment in **support of MEF operations.**

Organization: The Company is organized to provide **landing support** and throughput support for amphibious operations conducted by the MEF during amphibious assaults and subsequent operations ashore.

135.5 Define the mission and organization of Support Company of Transport Support Battalion.

The **mission of Support Company** of Transport Support Battalion is to **provide direct and general support, medium- and heavy-lift transportation support** and supply support for throughput and sustainment operations of the **LCE in support of the MEF.**

Organization: The Company is organized to **plan, coordinate, and supervise** the command **supply** and **transportation support** functions for the company in **support of the LCE's mission.**

135.6 Define the mission and organization of Motor T Company of Transport Support Battalion.

The **mission of the Motor T Company** of the Transport Support Battalion is to provide **general support, medium- and heavy-lift transportation support** for throughput and sustainment **operations** in **support of the MAGTF.**

Organization: The Company is structured to **facilitate task organization** for **operations** conducted by the battalion in support of sustained MAGTF operations.

136 LOGISTIC COMBAT ELEMENT (LCE), MEDICAL BATTALION FUNDAMENTALS

References:

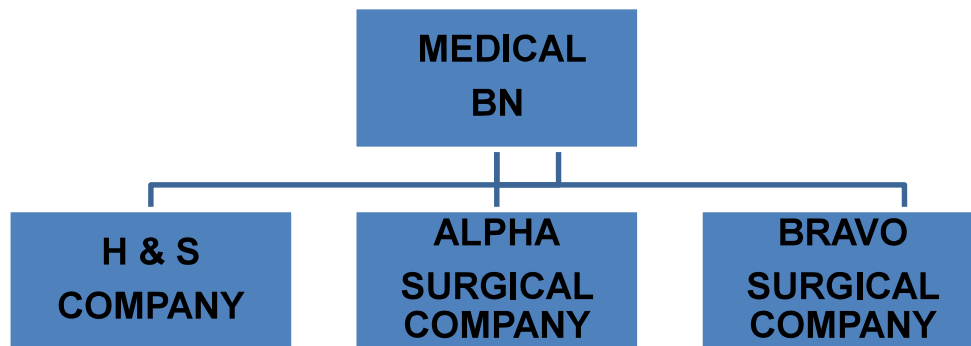
- [a] MCRP 5-12D, Organization of Marine Corps Forces
 - [b] MCWP 4-11.1, Health Service Support Operations
 - [c] Marine Corps Bulletin 5400 020011ZSEP 2005
 - [d] MARADMIN 576/05 Logistics Combat Element (LCE) Reorganization Update and POA&M
-

136.1 Describe the mission and organization of Medical Battalion.

HSS to MEF

The **mission of Medical Battalion** is to provide **direct and general Health Service Support to the MEF** in order to **sustain the combat effort across the full spectrum of MAGTF operations.**

Organization: The **Medical Battalion** is an independent **functional Battalion** organized to **plan, coordinate, and supervise** the **medical support** functions of the MEF. It is structured to facilitate task organization for operations conducted by the battalion in support of the MEF or any combination of smaller MAGTFs operating in widely separated geographical areas.



136.2 Discuss the six tasks of Medical Battalion:

6 TASKS = 2RIPMD

- Provide health care through the **2nd echelon of medical care**, including initial resuscitative care, resuscitative surgery, and temporary hospitalization of casualties, to the MEF.
- Provide medical **R**egulating services for the MEF.
- Assist in the **c**ollection, **a**nalysis, and **d**issemination of **m**edical **I**ntelligence.
- Provide **P**reventive medicine support to the MEF.
- Provide medical support for management of **M**ass casualties and combat stress casualties.
- Provide the **m**edical elements for the **e**stablishment of **c**asualty **D**econtamination and treatment stations.

136.3 Define the mission and organization of Medical Battalion H&S Company.

The **mission of Medical Battalion H&S Company** is to provide **command, control,** and command **support** functions for the **medical battalion.**

Organization: The Company is **organized to plan, coordinate, and supervise** the **command support functions for the battalion.** It is structured to facilitate task organization for operations conducted by the battalion in **support of MAGTF operations.**

136 LOGISTIC COMBAT ELEMENT (LCE), MEDICAL BATTALION FUNDAMENTALS (CONT'D)

136.4 Discuss four tasks of Medical Battalion H&S Company:

4 Tasks = LAMP

- Provide **L**imited medical evacuation for the battalion.
- Provide **A**ministrative, organic supply, light motor transportation, and maintenance support to the battalion.
- Provide **M**edical data coordination for the battalion.
- Provide **M**edical department **P**ersonnel, as required, to the headquarters elements.

136.5 Define the mission and organization of Medical Battalion Surgical Support Company.

The **mission of Medical Battalion Surgical Support Company** is to provide general medical support to the MEF, including medical treatment facilities for medical and surgical care and temporary casualty holding.

Organization: The Company is organized to plan, coordinate, and supervise assigned functions of medical support for the battalion. It is structured to facilitate task organization for operations conducted by the battalion in support of the MEF, MEF (FWD), or any combination of smaller MAGTFs. The Company consists of a headquarters platoon, triage/evacuation platoon, surgical platoon, holding platoon, combat stress platoon, and an ancillary service platoon. The surgical platoon consists of three surgical sections that support one operating room for 24-hour operations. The holding platoon contains three ward sections, each containing 20 medical/surgical beds. The ancillary services platoon contains two laboratory sections, two pharmacy sections and two X-ray sections.

136.6 Discuss the six tasks of the **Surgical Support Company**:

6 Tasks = MMRECM

- Establish **M**edical treatment facilities for resuscitative surgery, medical treatment, and temporary hospitalization of casualties.
- Establish **M**edical treatment facilities for resuscitative surgery, medical treatment, and temporary holding of casualties from supported forces.
- Be prepared to **R**eceive casualties from the next forward medical treatment echelon in the evacuation chain.
- Prepare to **E**vacuate casualties whose medical requirements exceed the established theater evacuation policy.
- Provide and **C**oordinate medical evacuation for the landing force.
- Provide **M**edical support to personnel of other services and nations as provided in applicable regulations and agreements, and provide humanitarian care as required by international law.

136.7 Define the mission and organization of Medical Battalion **Shock-Trauma Platoon**.

The **mission of Medical Battalion Shock-Trauma Platoon** is to provide direct medical support to the MEF, including collecting, clearing, and evacuating casualties from supported MEF elements, and provide medical treatment facilities for resuscitative treatment care and temporary holding of casualties.

Organization: The shock-trauma platoon is the smallest mobile medical support element of the medical battalion and is the first medical treatment facility of the MAGTF in support of the BAS. The eight shock-trauma platoons are structured to facilitate task organization for operations conducted by the battalion in support of the MEF, the MEF (FWD), or any combination of smaller MAGTFs. The platoon consists of a stabilization section and a

136 LOGISTIC COMBAT ELEMENT (LCE), MEDICAL BATTALION FUNDAMENTALS (CONT'D)

collecting and evacuation section. Each collecting and evacuation section has **two tactical ambulances** for collecting casualties from the next forward medical support echelon, and the stabilization section has **7-ton trucks** to move the shock-trauma platoon personnel and equipment.

136.8 Discuss **four tasks** of the **Shock Trauma Platoon**:

- **Provide medical support** to **personnel** of **other services** and **nations** as provided in applicable regulations and agreements and **provide humanitarian care** as required by international law.
- **Establish and operate clearing stations**, as required.
- **Establish medical treatment facilities** for resuscitative treatment and **temporary holding of casualties**.
- **Provide and coordinate medical evacuation**.

136.9 Define the mission and organization of the Medical Battalion **Forward Resuscitative Surgery System (FRSS)**.

The **mission of the FRSS** is to **provide surgery capability that can be quickly configured and erected to support any tactical medical situation ashore in a forward combat environment**. To provide lifesaving capabilities to support Marine Air-Ground Task Force operations on a **continuous 24-hour basis**, with a minimum mission duration of **48 hours without resupply**.

Organization: The forward resuscitative surgery system is a **free standing** or **connected modular configuration**, **highly mobile package** that includes personnel and medical material that transforms into a supplied surgical cockpit and/or encasement. The FRSS is capable of providing trauma management, resuscitative surgery, ancillary services, and temporary patient holding.

136.10 **Define the following acronyms:**

BAS	Battalion Aid Station
RAS	Regimental Aid Station
GAS	Group Aid Station
BDC	Blood Donor Center
CRTS	Casualty Receiving and Treatment Ship
FMC	Field Medical Card
HSS	Health Service Support
MAP	Medical Augmentation Program
MTF	Medical Treatment Facility
STP	Shock Trauma Platoon
TMIP	Theater Medical Information Program

**136 LOGISTIC COMBAT ELEMENT (LCE), MEDICAL BATTALION
FUNDAMENTALS (CONT'D)**

136.11 Define the following echelons of care:

- Level I:** Initial Emergency Care; includes; Buddy aid, Company Corpsman, BAS, and STP care.
- Level II:** Initial Resuscitative Surgical Care; includes; FRSS's and CRTS's.
- Level III:** Resuscitative Care; includes; Fleet Hospitals, TAH's and Army CSH's
- Level IV:** Definitive Care; includes overseas MTF's.
- Level V:** Rehabilitative Care; includes CONUS facilities capable of rehabilitating patients to the greatest extent possible.