

132 LOGISTIC COMBAT ELEMENT (LCE), MAINTENANCE BATTALION FUNDAMENTALS

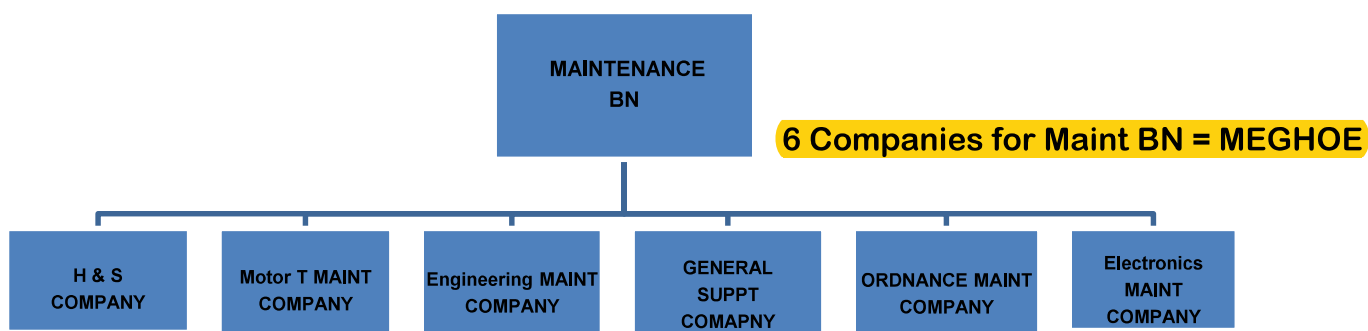
References:

- [a] MCRP 5-12D, Organization of Marine Corps Forces
 - [b] MCWP 4-11.4, Maintenance Operations
 - [c] Marine Corps Bulletin 5400 020011ZSEP 2005
 - [d] MARADMIN 576/05 Logistics Combat Element (LCE) Reorganization Update and POA&M
-

132.1 Define the mission and organization of Maintenance Battalion:

The **mission of Maintenance Battalion** is to provide intermediate-level maintenance support to include wheeled and tracked vehicle recovery, salvage and disposal, and general maintenance support, for the MEF's ground equipment in order to improve and sustain MAGTF combat power. Provide Secondary Repairable Management, including inventory management, storage, financial accounting, and maintenance for secondary low-density repairable.

Organization: The Maintenance Battalion is a functional battalion within a Combat Logistics Regiment and is structured to provide command and control for centralized coordination and decentralized execution of maintenance efforts to sustain the combat power of the MEF. Subordinate companies are organized along functional area lines to provide maintenance support in commodity areas that are critical to the war fighting capabilities of the MEF.



132.2 Discuss the eight tasks of the Maintenance Battalion:

8 Tasks = 34 TIC TOT

- T** – Provide **technical assistance** and overflow organizational (2d echelon) maintenance for supported units as directed by higher headquarters.
- O** – Provide **organizational** (2d echelon) and intermediate (3d and 4th echelon) **maintenance on end items**.
- 3** – Provide **3d echelon maintenance on end items** by means of component/subassembly replacement or repair.
- 4** – Provide intermediate **(4th echelon) maintenance** in support of the secondary repairable program, including repairing and rebuilding components and subassemblies of end items.
- C** – Provide **calibration services for electronic and mechanical test**, measurement and diagnostic equipment.
- T** – Provide a **tracked-vehicle evacuation** capability.
- T** – Provide **technical inspection services**, as required, in support of equipment maintenance programs of the MEF.
- I** – Provide **intermediate maintenance and modification applications** on in-stock equipment.

132 LOGISTIC COMBAT ELEMENT (LCE), MAINTENANCE BATTALION FUNDAMENTALS (CONT'D)

132.3 Define the mission and organization of Maintenance Battalion **H&S Company**.

The **mission of Maintenance Battalion H&S Co** is to **provide command and control, administration**, and command support functions for the maintenance battalion.

Organization: The Company is organized to **plan, coordinate, and supervise** the logistic/CSS functions of the subordinate elements of the battalion with assistance from the battalion supply and motor transport sections. It is structured to facilitate task organization for maintenance operations in support of the MEF or any combination of smaller MAGTFs.

132.4 Define the mission and organization of Maintenance Battalion **Ordnance Maintenance Company**.

The **mission of Maintenance Battalion Ordnance Maintenance Company** is to provide intermediate **(3d and 4th echelon) maintenance support for** Marine Corps-furnished **ordnance equipment** of a MEF.

Organization: The Company is structured to **provide the appropriate technical, supervisory personnel, equipment, and ordnance** maintenance support, to the MEF. It is organized to facilitate the task organization of ordnance maintenance assets for support **of a MEF** or up to **four MEUs**.

132.5 Define the mission and organization of Maintenance Battalion **Engineer Maintenance Company**.

The **mission of Maintenance Battalion Engineer Maintenance Company** is to **provide intermediate (3rd and 4th echelon) maintenance** support for Marine Corps-furnished **engineering equipment** of a MEF.

Organization: The Company is structured to provide the **appropriate technical, supervisory personnel and equipment** necessary to provide engineering maintenance support to the MEF. It is organized to facilitate the task organization of engineering maintenance assets for support of a **MEF** or up to **four MEUs**.

132.6 Define the mission and organization of Maintenance Battalion **Electronics Maintenance Company**.

The **mission of Maintenance Battalion Electronics Maintenance Company** is to provide **intermediate maintenance (3d and 4th echelon) support for** the Marine Corps-furnished **ground communications-electronics equipment** of a MEF.

Organization: The Company is structured to provide the appropriate technical, supervisory personnel and equipment necessary to **provide communications-electronics maintenance** support to the MEF. It is organized to facilitate the task organization of communications-electronics maintenance assets for **support of a MEF or up to four MEUs**.

132.7 Define the mission and organization of Maintenance Battalion **Motor Transport Maintenance Company**.

The **mission of Maintenance Battalion Motor Transport Maintenance Company** is to provide **intermediate (3rd and 4th echelon) maintenance** support for the **motor transport equipment** of the **MEF**.

132 LOGISTIC COMBAT ELEMENT (LCE), MAINTENANCE BATTALION FUNDAMENTALS (CONT'D)

Organization: The Company is structured to provide the appropriate technical, supervisory personnel and equipment necessary to provide motor transport maintenance support of a MEF. It is organized to facilitate the task organization of motor transport maintenance assets for support of a MEF or up to four MEUs.

132.8 Define the mission and organization of Maintenance Battalion General Support Maintenance Company.

The mission of Maintenance Battalion General Support Maintenance Company is to provide general support, intermediate (3d and 4th echelon) maintenance support, including component rebuilding for Marine Corps-furnished ground equipment of a MEF, except for communications-electronics equipment and fire control components.

Organization: The Company is structured to provide the appropriate technical, supervisory personnel and equipment necessary to augment the maintenance elements of a LCE with a general support intermediate maintenance capability. It is organized to facilitate the task organization of general support maintenance assets for support of a MEF or up to four MEUs.

132.9 Discuss each echelon/level of ground equipment maintenance:

Three categories of maintenance exist within the Marine Corps' ground equipment maintenance system; organizational, intermediate, and depot. Within these three categories are five echelons of maintenance. To manage maintenance effectively, commanders must understand their maintenance responsibilities and the maintenance responsibilities of those units in support.

Organizational Maintenance: The using unit performs organizational maintenance on its assigned equipment. Organizational maintenance focuses on the operator and crew preventive/corrective measures which normally consist of inspecting, servicing, lubricating, and adjusting; replacing parts, minor assemblies, and subassemblies. Organizational maintenance includes first and second echelon maintenance responsibilities.

- First Echelon maintenance: performed by the user/equipment operator.
- Second Echelon maintenance: performed by specially trained personnel within the organization.

Intermediate Maintenance: Intermediate maintenance is the responsibility of and performed by designated maintenance activities in direct support of using organizations. Intermediate maintenance normally consists of calibration, repair, or replacement of damaged or unserviceable parts. Intermediate maintenance includes third and fourth echelon maintenance.

- Third and Fourth Echelon maintenance: almost always performed by specially trained personnel at designated maintenance activities.

Depot Maintenance: Depot maintenance is performed on materiel that requires a major overhaul or a complete rebuilding of parts, assemblies, subassemblies, and end items. This level of maintenance normally consists of the manufacture of parts, modifications, testing, and reclamation, as required. Depot maintenance also provides stocks of serviceable equipment that are not available in lower echelon maintenance activities and includes the fifth echelon of maintenance.

- Fifth Echelon maintenance: almost always performed at the depot level; however, it can be performed at intermediate maintenance activities if specifically authorized by the Commandant of the Marine Corps.

132 LOGISTIC COMBAT ELEMENT (LCE), MAINTENANCE BATTALION FUNDAMENTALS (CONT'D)

132.10 Define the following maintenance terminologies:

Overhaul: The restoration of an item to a completely serviceable condition as prescribed by maintenance serviceability standards.

Preventive Maintenance: The care and servicing by personnel for the purpose of maintaining equipment and facilities in satisfactory operating condition before failures occur or before they develop into major defects.

Rebuild: The restoration of an item to a standard as nearly as possible to its original condition in appearance, performance, and life expectancy.

Repair: The restoration of an item to serviceable condition through correction of a specific failure or unserviceable condition.

Unserviceable: An item in a condition unfit for use, but which can be restored to a serviceable condition after repair, rebuild, or overhaul.

6 Companies:

- M: Motor "T" Co- Interm. maint. Motor T of a MEF
- E: Engineering Co- Interm maint of Eng equip of a MEF
- G: General maint - component rebuild
- H: H&S - Command/Control functions for BN
- O: Ordnance -3/4 Echelon main of ord equip of MEF
- E: Electronic - 3/4 Echelon maint on ground comms of a MEF

8 Tasks:

- 3: 3rd Echelon Maint on end items
- 4: 4th Echelon Maint on secondary repairable programs
- T: Tracked vehicle recovery
- i: Intermediate maint + modifications on in stock equip
- C: Calibration services
- T: Tech assist + organization (2 Ech) maint.
- O: Organization (2 Ech) + Intermediate (3+4 Ech) maint. on end items
- T: Tech inspections services

Think of Echelons of Maintenance like medical care

- 1st Echelon of care = Self Aid/Corpsman Aid (User)
- 2nd Echelon of care = STP/FRSS (Specially trained within unit)
- 3rd Echelon of care = BAS/Hospital (Outside unit, specially trained)
- 4th Echelon of care = Major Hospital "Ramstein AFB"
- 5th Echelon of care = Walter Reid or back home high level of care

133 LOGISTIC COMBAT ELEMENT (LCE), SUPPLY BATTALION FUNDAMENTALS

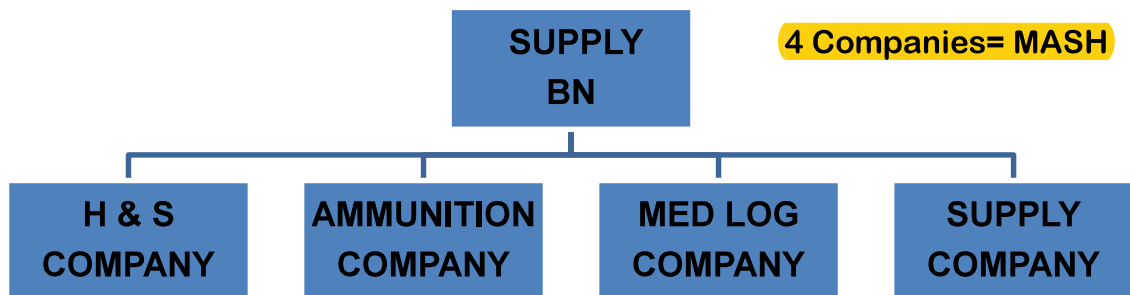
References:

- [a] MCRP 5-12D, Organization of Marine Corps Forces
- [b] MCWP 4-1, Logistics Operations
- [c] MCWP 4-11.1, Health Service Support Operations
- [d] Marine Corps Bulletin 5400 020011ZSEP 2005
- [e] MARADMIN 576/05 Logistics Combat Element Reorganization Update and POA&M

133.1 Define the mission and organization of Supply Battalion.

The **mission of Supply Battalion** is to provide general support, ground supply support, less bulk fuel, and Navy funded stock/programs and Distribution system management for the sustainment of Marine Air Ground Task Force operations.

Organization: The Supply Battalion a functional battalion within a Combat Logistics Regiment and is organized to provide commodity-oriented, task-organized detachments for the sustainment of MAGTF operations.



133.2 Discuss the 12 tasks of Supply Battalion of the MLG:

12 TASKS

S
C
W
A
S
R
R
T
R
I
P
P

- Provide **supply support management** for the MLG and other MEF elements beyond organic capabilities of supported units, to include; management of the MEF's special allowance training pool items and initial issue of provisioning assets; management of the MEF's secondary repairables through maintenance; technical management, data research, customer service, and general assistance to the MEF for supply matters; providing status reports for the MEF as required; and interface for the MEF with financial and maintenance management systems.
- Provide **contracting support** and cross servicing services for supported units, as required.
- Provide a **warehousing capability** in support of the MEF.
- Provide **accounting for classes I, II, IV, VII, VIII, and IX supplies**, initial issue provisioning assets, and authorized levels of war reserve.
- Provide **subsistence support to the MEF**, including operation of class I subsistence dumps and storage, issue, and accounting for subsistence items.
- Provide **receipt, storage, and forwarding of class III (packaged) supplies**.
- Provide **receipt, storage, issue, and accounting functions for class V items**. Provide **technical assistance in receipt, storage, assembly, and provision of nuclear ordnance**.
- Provide for the **receipt, storage, issue, and organizational and intermediate maintenance support for class VIII supplies and equipment**
- Provide **intermediate-level shop stores** issue points for the MEF.

133 LOGISTIC COMBAT ELEMENT (LCE), SUPPLY BATTALION FUNDAMENTALS (CONT'D)

- Provide **procurement services** for the MEF for items decentralized by the integrated materiel manager
- Provide **packing, preservation, and packaging** (PP&P) services

133.3 Name and define the **10** classes of supply: **Classes = SCPCAPMMRM**

- I Subsistence:** includes gratuitous health and welfare items and rations.
- II Clothing:** individual equipment, tentage, organizational tool sets and kits, hand tools, administrative and housekeeping supplies, and equipment.
- III Petroleum:** oils and lubricants, which consist of petroleum fuels, lubricants, hydraulic and insulating oils, liquid and compressed gases, bulk chemical products, coolants, de-icing and antifreeze compounds, and coal. **IIIA=Jetfuel**
- IV Construction:** includes all construction material; installed equipment; and all fortification, barrier, and bridging materials.
- V Ammunition:** including but not limited to; chemical, radiological, special weapons, bombs, explosives, mines, detonators, pyrotechnics, missiles, rockets, propellants, and fuses.
- VI Personal:** demand items or nonmilitary sales items.
- VII Major End Items:** are the combination of products assembled and configured in their intended form and ready for use (e.g., launchers, tanks, mobile machine shops, vehicles).
- VIII Medical/Dental Material:** which includes medical-unique repair parts, blood and blood products, and medical and dental material.
- IX Repair Parts:** (less class VIII), including components, kits, assemblies, and subassemblies (repairable and non-repairable), required for maintenance support of all equipment.
- X Material:** to support nonmilitary requirements and programs not included in classes I through IX. For example, materials needed for agricultural and economic development.

133.4 State the **six** functions of **supply**:

6 Functions of Supply = RPDDSS
RP's Don't Do Shit on Sundays

- **Requirements Determination;** routine, pre-planned, or long-range.
- **Procurement**
- **Distribution**
- **Disposal**
- **Storage**
- **Salvage**

A way to remember: Think of ordering supplies. First, SUPPLY needs to Determine the Requirements, Procure them, Distribute the items, Dispose of whatever we don't use, Store excess supplies, and finally Salvage or recycle our wasted supplies.

133 LOGISTIC COMBAT ELEMENT (LCE), SUPPLY BATTALION FUNDAMENTALS (CONT'D)

133.5 Define the mission and organization of Supply Battalion **H&S Company**.

The **mission of Supply Battalion H&S Company** is to **provide command and control administration**, and command support functions for the supply battalion and general subsistence supply support to the MEF.

Organization: The Company is organized to **plan, coordinate, and supervise** the command support functions of the battalion and to provide specified general support supply functions for the MAGTF. It is structured to facilitate task organization of detachments for operations conducted by the battalion in support of MAGTF operations.

133.6 Define the mission and organization of Supply Battalion **Ammunition Company**.

The **mission of Supply Battalion Ammunition Company** is to **provide general class V supply support to the MEF**.

Organization: The Company is organized to **plan, coordinate, and supervise class V** support functions. It is structured to facilitate task organization of detachments for operations conducted by the supply battalion in support of the MEF and any combination of smaller MAGTFs.

133.7 Define the mission and organization of Supply Battalion **Medical Logistics Company**.

The **mission of Supply Battalion Medical Logistics Company** is to **provide general supply and maintenance support for class VIII materiel to the MEF**.

Organization: The Company is organized to **plan, coordinate, and supervise** the command support functions of the battalion. It is structured to facilitate task organization of detachments in support of MAGTF operations.

133.8 Define the mission and organization of Supply Battalion **Supply Company**.

The **mission of Supply Battalion Supply Company** is to provide **general supply support**, including supply **management** and control, to **sustain the operations of the MEF**.

Organization: The Company is organized to facilitate the task organization of detachments that are capable of providing control and management of supply support to elements of the MEF or for MAGTFs smaller than a MEF.

133.9 Define **Authorized Medical Allowance Lists (AMALs)** and **Authorized Dental Allowance Lists (ADALs)**.

AMALs and ADALs are configured in equipment and supply assemblages. The equipment assemblage contains equipment and reusable materiel required to establish a basic function (e.g., an operating room). The supply assemblage contains the consumable material to support the function in treating a designated number of casualties or to perform a specific task. For readiness purposes, an equipment module may be stored in combination with its supply module. The materiel listed in each AMAL/ADAL is the minimum amount to be maintained. Marine Corps Order 4400 series contains AMAL and ADAL procurement policies and procedures. AMALs and ADALs are maintained and resupplied by the Medical Logistics Company.