

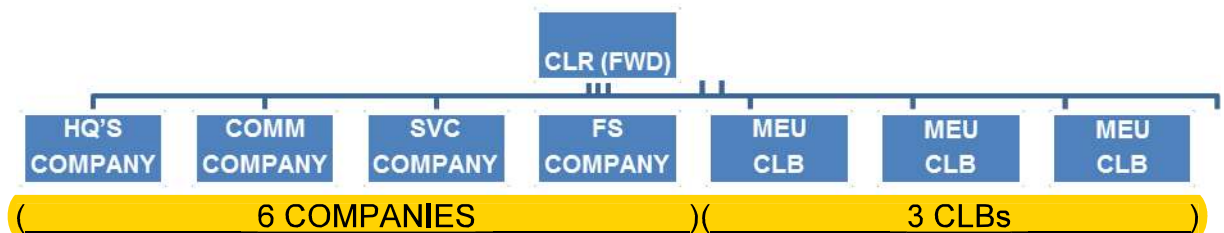
130 LOGISTIC COMBAT ELEMENT (LCE), HEADQUARTERS REGIMENT FUNDAMENTALS

References:

- [a] MCWP 4-11.8, Services in an Expeditionary Environment
- [b] Marine Corps Bulletin 5400 020011ZSEP 2005
- [c] MARADMIN 576/05 Logistics Combat Element (LCE) Reorganization Update and POA&M

130.1 Define the mission of the MLG Headquarters Regiment.

The **mission of MLG Headquarters Regiment** is to provide command and control, administration, communications, food services for the MLG. Provide LCEs for Marine Expeditionary Units (MEUs), Marine Expeditionary Brigade (MEB) or a Special Marine Air-Ground Task Force (SPMAGTF).



130.2 Define the **six tasks** of the **MLG Headquarters Regiment**:

6 Tasks = CSCFNG

- C** – Provide necessary **command support** functions for the MLG and MLG HQ.
- S** – Provide **services** to the MEF and MAGTFs smaller than a MEF, beyond organic capabilities of supported units, in the sub functional areas of disbursing, postal, exchange, legal, and personnel retrieval and processing.
- C** – Provide **communications support** for the MLG headquarters, subordinate MLG organizations, and LCEs of MAGTFs.
- F** – Provide **food service support** to the MLG and beyond the organic capabilities of supported units of the MEF.
- N** – Provide the **nucleus staff** for coordination of marshalling and deployment support for the MEF, with necessary augmentation from supported units as required.
- G** – Provide **general support tactical logistics** to support Marine Expeditionary Units (MEUs).

130.3 Define the mission of the MLG Headquarters Regiment **HQ Company**.

The **mission of MLG Headquarters Regiment HQ Co** is to **provide command and control, administration** and command support functions for the MLG HQ Regiment and the Logistics Combat Element (LCE) headquarters.

130.4 Define the mission of the MLG Headquarters Regiment **Communications Company**.

The **mission of MLG Headquarters Regiment Comm Co** is to **provide communications support** to the **headquarters of the MLG** and subordinate Logistics Combat Elements (LCE) beyond their organic communications capabilities **in support** of Marine Air-Ground Task Force (MAGTF) operations.

130 LOGISTIC COMBAT ELEMENT (LCE), HEADQUARTERS REGIMENT FUNDAMENTALS (CONT'D)

130.5 Define the mission of the MLG Headquarters Regiment **Service Company**.

The **mission of MLG HQ Regiment Service Co** is to **provide general support services** such as **postal, disbursing, legal**, and **exchange services support** for the Marine Expeditionary Force (MEF).

130.6 Define the mission of the MLG Headquarters Regiment Food Services Company.

The **mission of MLG HQ Regiment Food Service Co** is to **provide general support and field food service** support for the MLG, the MEF Command Element (CE) and the Ground Combat Element (GCE), **exceeding their organic capability**.

NOT to the ACE

130.7 Define the mission of the MEU CLB.

The **mission of the MEU CLB** is to provide a full range of expeditionary combat service support in direct support to the Ground Combat Element, Aviation Combat Element, or Command Element of the MEU in order to enable the accomplishment of all assigned missions across a wide spectrum of conflict and conventional and selected maritime special operations. To be prepared to conduct simultaneous, self-sufficient tactical security operations to ensure that the provision of this support is not interrupted in a hostile environment and to allow the supported unit to continue operations independent of any logistically driven operational pauses.

GFTMETRICS

130.8 Define the **10 tasks** of the MEU CLB and its platoons:

- Provide **Ground** vehicle recovery and evacuation.
- Provide **Repair** parts from a repairable issue point.
- Provide **Intermediate** maintenance support for ground element equipment (less critical low-density equipment within the supported units' organic capability).
- Provide **Maintenance Support** Teams that inspect, diagnose, classify, and repair equipment at forward sites.
- Provide **Supply** point and units re-supply via mobile combat service support elements.
- Provide **Transportation** support including material-handling equipment.
- Conduct **Engineering** operations to include mobility, counter mobility, survivability, construction and demolition.
- Coordinate and conduct **Force Protection** defensive operations to include rear area security and internal security.
- **Train** and organize to deploy as the command element and other task organized LCE's that support worldwide exercises and operations.
- **Conduct** convoy operations and associated convoy security preparations.

Ground Vehicle Recovery

Force Protection

Train and organize

Maintenance Support

Engineering Ops

Transportation

Repair parts

Intermediate Maintenance Support

Conduct Convoy Ops

Supply and Re-supply