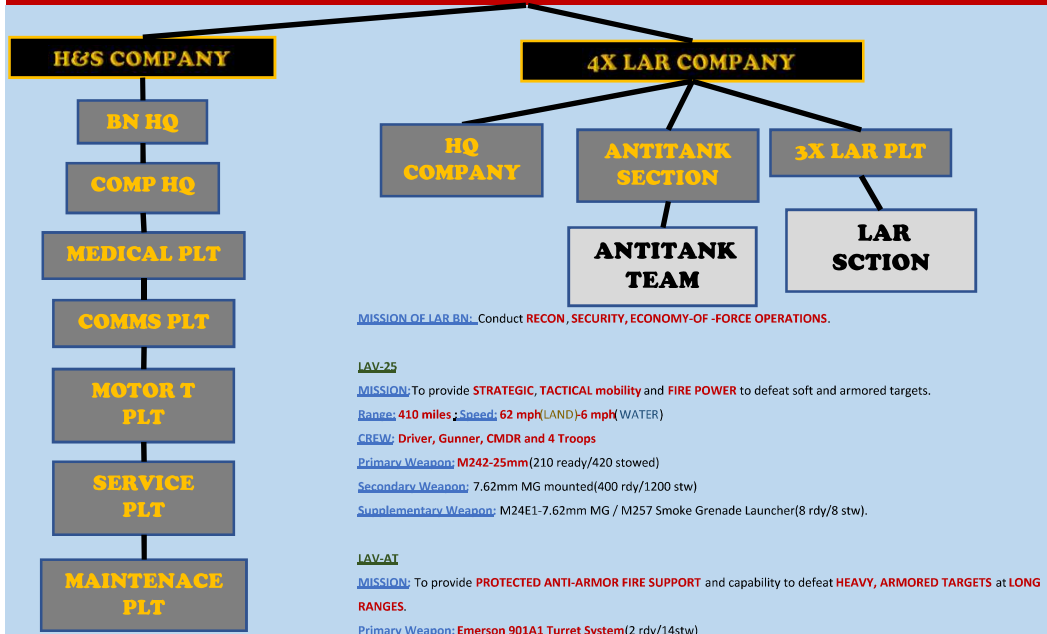


# LIGHT ARMORED RECON BN



MISSION OF LAR BN - Conduct **RECON, SECURITY, ECONOMY-OF -FORCE OPERATIONS.**

**LAV-25**

MISSION: To provide **STRATEGIC, TACTICAL mobility** and **FIRE POWER** to defeat soft and armored targets.

Range: 410 miles; Speed: 62 mph(LAND)-6 mph(WATER)

CREW: Driver, Gunner, CMDR and 4 Troops

Primary Weapon: M242-25mm(210 ready/420 stowed)

Secondary Weapon: 7.62mm MG mounted(400 rdy/1200 stw)

Supplementary Weapon: M24E1-7.62mm MG / M257 Smoke Grenade Launcher(8 rdy/8 stw).

**LAV-AT**

MISSION: To provide **PROTECTED ANTI-ARMOR FIRE SUPPORT** and capability to defeat **HEAVY, ARMORED TARGETS** at **LONG RANGES.**

Primary Weapon: Emerson 901A1 Turret System(2 rdy/14stw)

Secondary Weapon: M240E 7.62mm MG(200 rdy/800 stw)

Supplementary Weapon: M257 Smk Gren Launcher(8 rdy/ 8 stw)

**LAV-C2**

MISSION: **Mobile Command Station**

Primary Weapon: M24E-7.62mm MG(200 rdy/800 stw) / Suppl: M257 Smk Gr Launcher(8r/8s)

**LAV-L**

MISSION: Provides **AMMO, RATIONS,** and **POL**(petrol/oil/lubricant).

Primary Weapon: M240E-7.62mm MG (200r/800s)

Supplementary Weapon: M257 Smoke Grenade Launcher(8r/8s)

**LAV-M**

MISSION: To provide **INDIRECT FIRE SUPPORT** to light Infantry and Recon.

Primary Weapon: M252-81mm Mortar (5 ready / 94 stowed)

Secondary Weapon: M240E1-7.62mm MG (200 ready/800 stowed)

Supplementary Weapon: M257 Smoke Grenade Launcher (8 ready/8 stowed)

**LAV-R - Recover/Support disabled vehicles**

Primary Weapon: M240E-7.62mm MG (200 ready/ 800 stowed) & M257 Smk Gr (8r /8s)

**NOTE:**All Vehicles have **SAME Features:** ALL- TERRAIN, ALL WEATHER, NIGHT CAPABLE, AIR TRANSPORTABLE, FULLY AMPHIBIOUS IN MAX 3 MIN, WINCH RECOVERY BOOM(30,000 LBS), BOOM CRANE(9,000 lbs)