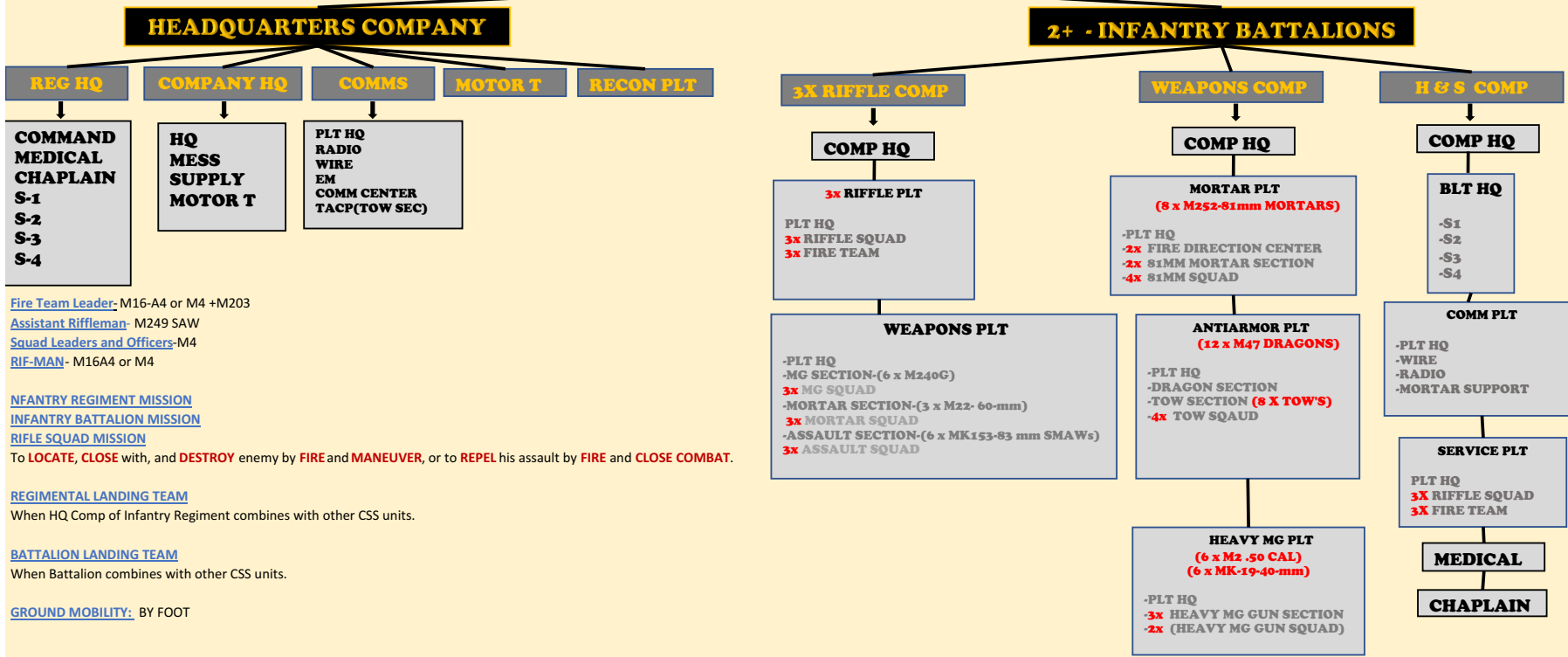


3X INFANTRY REGIMENT



[Fire Team Leader](#)- M16-A4 or M4 +M203
[Assistant Rifleman](#) - M249 SAW
[Squad Leaders and Officers](#)-M4
[RIF-MAN](#) - M16A4 or M4

[INFANTRY REGIMENT MISSION](#)
[INFANTRY BATTALION MISSION](#)
[RIFLE SQUAD MISSION](#)

To **LOCATE**, **CLOSE** with, and **DESTROY** enemy by **FIRE** and **MANEUVER**, or to **REPEL** his assault by **FIRE** and **CLOSE COMBAT**.

[REGIMENTAL LANDING TEAM](#)
 When HQ Comp of Infantry Regiment combines with other CSS units.

[BATTALION LANDING TEAM](#)
 When Battalion combines with other CSS units.

[GROUND MOBILITY](#): BY FOOT