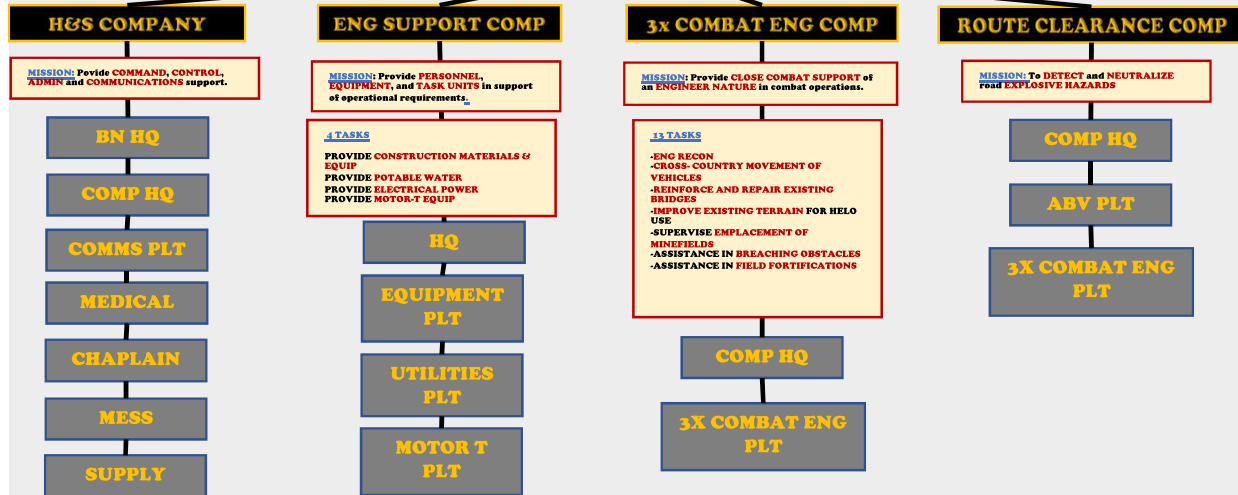


COMBAT ENGINEER BATTALION



COMBAT ENGINEER BATTALION

MISSION: Enhance **MOBILITY, COUNTERMOBILITY, and SURVIVABILITY** of MARDIV through **CLOSE COMBAT ENGINEER SUPPORT.**

6 MOBILITY TASKS

- ENGINEER **RECONNAISSANCE**
- PLAN, ORGANIZE, AND COORDINATE ASSAULT BREACH
- EMPLOY ASSAULT BRIDGE SYSTEMS
- PROVIDE EXPEDIENT **REPAIR AND REINFORCEMENT** OF BRIDGES
- CONSTRUCT EXPEDIENT SHOT-SPAN BRIDGES
- PROVIDE TEMPORARY **REPAIR OF ROADS**

3 COUNTERMOBILITY TASKS

- PLAN, ORGANIZE, AND COORDINATE **CONSTRUCTION OF EXPLOSIVE/NON-EXPLOSIVE OBSTACLES**
- PLAN AND **CONSTRUCT OBSTACLES THAT REQUIRE SPECIAL ENGINEERING EQUIPMENT**
- PERFORM SPECIAL **DEMOLITION MISSIONS**

SURVIVABILITY TASK

- DEVELOPMENT OF TEMPORARY **PROTECTIVE POSITIONS** FOR PERSONNEL AND EQUIPMENT

3 GENERAL ENGINEERING TASKS

- PROVIDE **ESSENTIAL CONSTRUCTION SUPPORT**
- PROVIDE **UTILITY SUPPORT**
- CONSTRUCT AND IMPROVE EXPEDIENT **VTOL SITES**

VEHICLES

CAT I MBAP (mine-resistant, ambush-protected)

MISSION: Supports small unit combat operations in urban or confined areas.

Range: 420 miles, **Cruise speed:** 20-30 mph, **Max speed:** 65 mph, **Crew:** 3- driver, cmdr, gunner
Weapons: M240-7.62mm MG or HBM2 .50 cal MG or MK19 MOD3 40mm MG, **Troop Capacity:** 4

CAT II MBAP

MISSION: Supports small unit combat operations in urban or confined areas.

Range: 350 miles, **Cruise speed:** 20-30 mph, **Max speed:** 65 mph, **Crew:** 3- driver, cmdr, gunner
Weapons: M240-7.62mm MG or HBM2 .50 cal MG or MK19 MOD3 40mm MG, **Troop Capacity:** 10

CAT III(A1) (Buffalo)

MISSION: Route Clearance and personnel protection against ANTI-PERSONNEL and ANTI-TANK mines.

Range: 330 miles, **Cruise speed:** 20-30 mph, **Max speed:** 55 mph, **Crew:** 3- driver, cmdr
Weapons: None, **Troop Capacity:** 4

HUSKY MK III

MISSION: IED Detection

Range: 497 miles, **Cruise speed:** 20-45 mph, **Max speed:** 62 mph, **Crew:** driver
Weapons: None, Troop CAP: None

M1 ABV- Assault Breacher Vehicle

MISSION: PATH CLEARING OF MINEFIELDS BY LINE-CHARGE DETONATION

WEAPONS: 50 CAL MG, ROCKET-PROPELLER LINE OF C4 UP TO 150 YARDS

M60A1 AVLB- Armored Vehicle Launched Bridge

MISSION: Launch and Retrieve a 60 ft SCISSOR-TYPE Bridge with WIDTH 12 ft .6 in.

Emplacement: 2-5 min

Retrieval: 10 min